

Customized and powered by 50-100 watts high efficient super cell solar panel.

Designed to withstand the harshest and most extreme environments has to offer from blistering heat to driving rain, hail and sub zero temperatures. Whatever the environment is, rugged construction is up for the challenge. Its internal components offer IP65 weather protection and its external components are built with marine grade aluminium and stainless steel fixings.

Using CREE High Power LED light life span more than 50,000.00 hours, which is 5 times longer than conventional light bulb.

The most technically advanced CREE LED lighting technologies that work seamlessly and systematically with our latest LED driver and Intelligent Power Management System (iPMS). Our newly designed LED lens features a variety of lighting distributions and power options ranging from output.

Good light color rendering for excellent light effect, near natural color make people's visual comfort and no glare beam.

An advance 40 watts CREE LED that produced 5,000 lumens (full power mode) with Guardian PIR Motion Sensor activation. Normal operation or dim model with 1,000 lumen (dim mode).

Built-in GAMMA advance Pulse Width Modulation charge controller, microprocessor, automatic lighting controller and timer system.

Designed for 5-8 meter pole height and 15-20 meter distance between pole to pole.



## The Omega Street Light With PIR Motion Sensor

### THE DESIGN

Built-in Guardian PIR Motion Sensor feature that automatically control the LED light output from full brightness model (5,000 lumen) to a lower level dim mode (1,000 lumen) depending upon the detection of movement around the light. This fluctuation of lighting intensity preserves battery power and also serves to increase community security by deterring unsociable activity late at night and early in the morning where these lights are installed.

The 'All-In-One Solar Street Light' concept design that fully integrates a highly efficient solar panel, Fusion battery and a Intelligent Power Management System (iPMS) into a compact, easy to install product (Plug & Play). More importantly, the design eliminates the need for external wiring to remote battery packs and light heads meaning installation can be carried out without a specialist contractor  
Very safe because 12 volt direct current system

### FUSION BATTERY

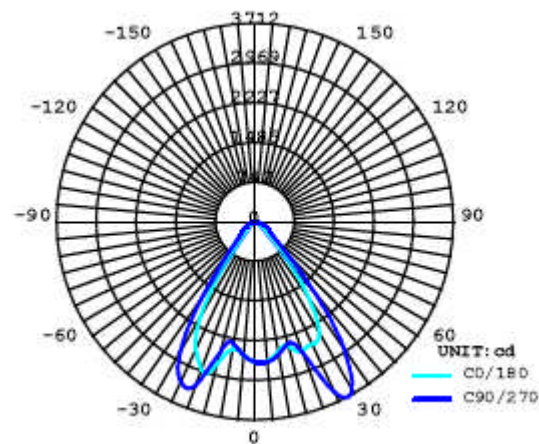
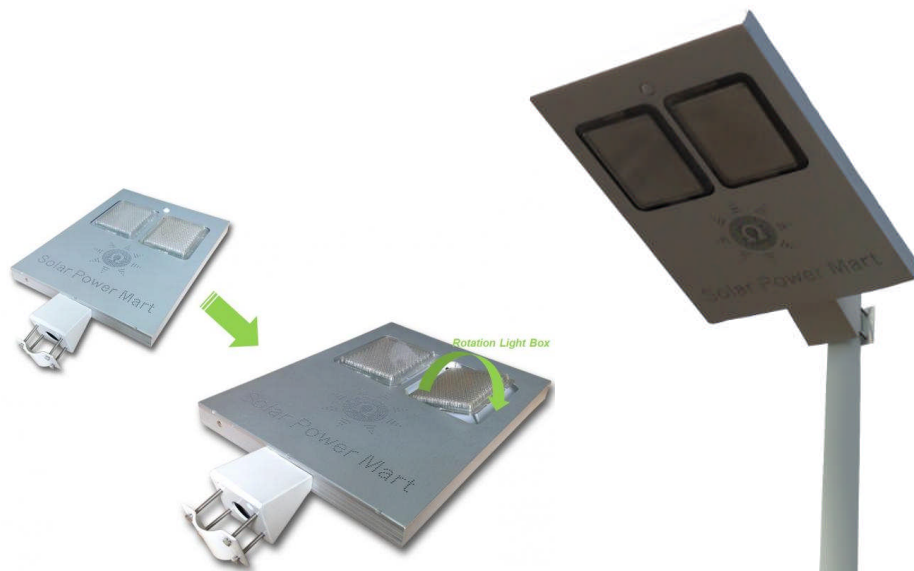
20-80AH Fusion battery bank and 2-5 days battery reserve.

Our in-house developed new-generation, high quality fusion batteries manufactured to high standards for high power applications and longevity. Key benefits include enhanced safety, strong thermal stability, tolerance to abuse, a high current rating and a 1500 cycle life. Fusion batteries are half the weight and size of lead acid and some other deep cycle batteries, take higher voltage under load and offer as much as 10 times the cycle life. Fusion batteries are also fully recyclable, making them the smart choice for our precious environment.

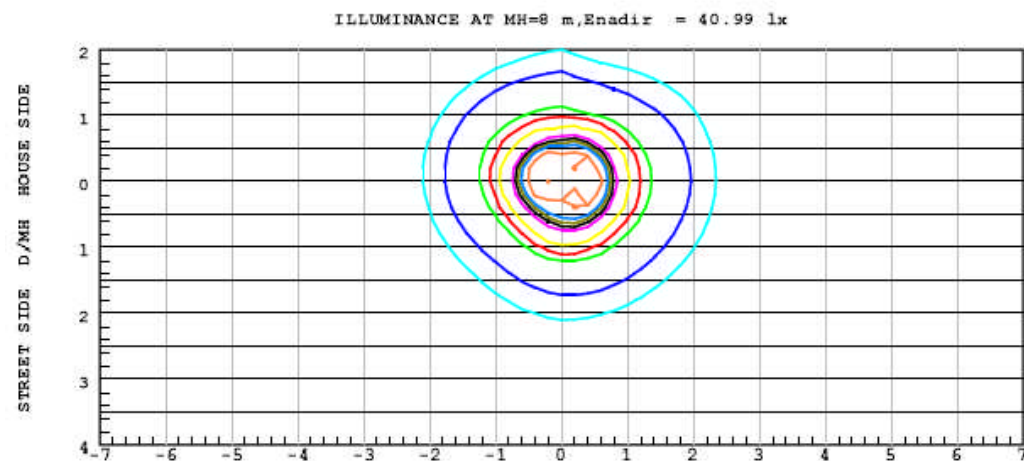
Fusion batteries are charged for maximum efficiency using our GAMMA advance Solar Charge Controller that constantly monitors the state of the batteries to optimise the charging levels while protecting them against overload, over-charge, over-discharge and accidental short circuit. The batteries can operate in temperatures from -10 degrees to 50 degrees Celsius.

## All-In-One Solar Street Light SLM905000

SPECIFICATIONS	
Solar Panel	50-100W Super Cell
Weather Rating	IP65
Battery	20-40AH Fusion Battery
Luminous Flux	Full Power Mode: 5,000lm, Dim Mode: 1,000lm
Working Time	Dim Mode More Than 12 Hours
Light Source	640 Unit CREE LED, CREE Customize Series
Lens	Round Beam with Magnify Technology
Solar Charge Controller	GAMMA 3.0
LED Driver & Power	Intelligent Power Management System (iPMS) - Self Learning AI
Motion Sensor	Guardian Passive Infra Red Motion Sensor With Long Detection Range Series
Pole Height	5 to 8 Meter
Distance Between Pole	15 to 20 Meter Between Lights
Operating Temperature	-10°C to +50°C

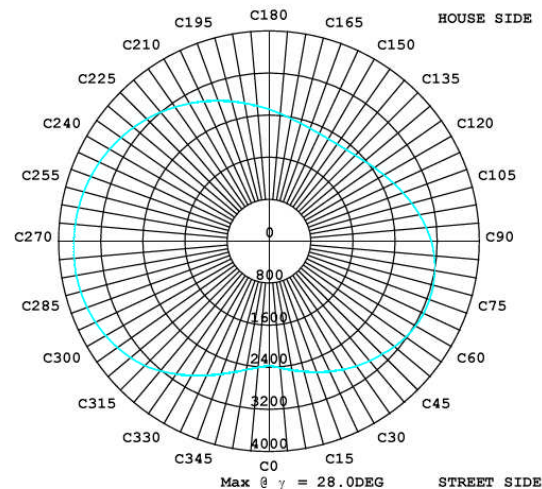


PHOTOMETRIC



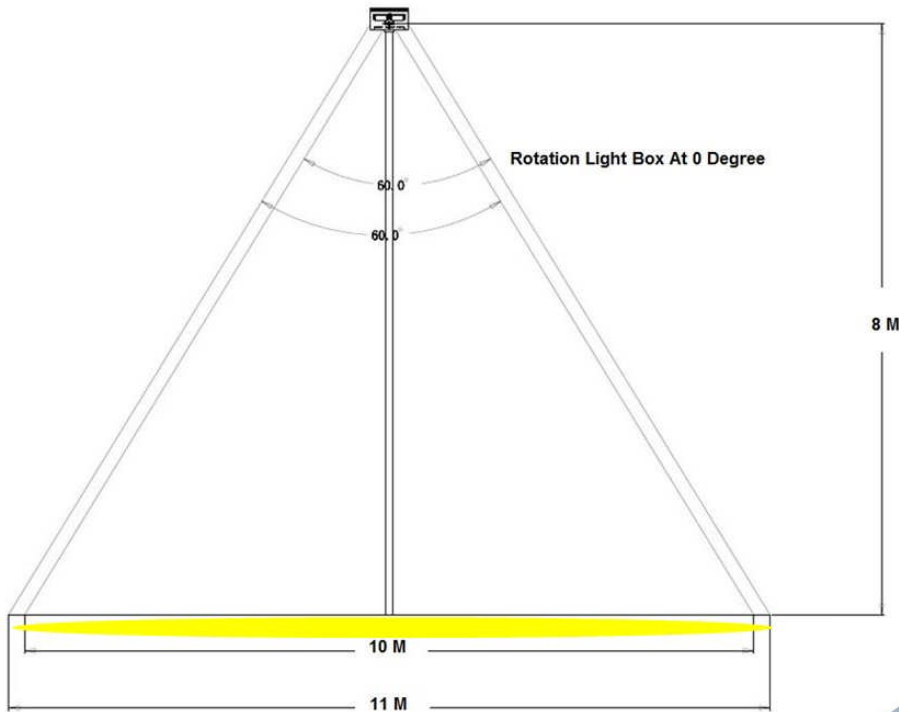
ISOLUX DIAGRAM

RATIO OF DISTANCE TO MOUNTING HEIGHT

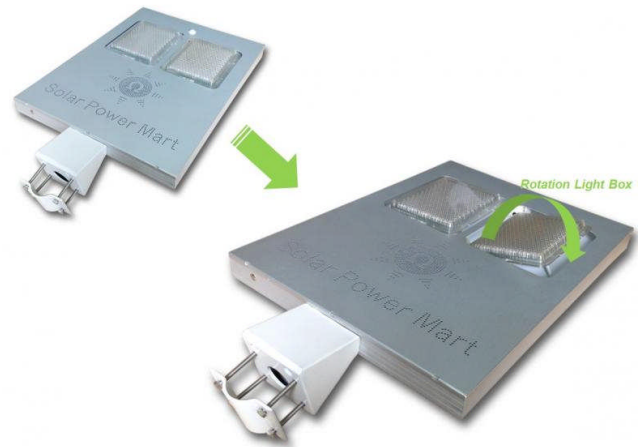


ISOCANDELA DIAGRAM

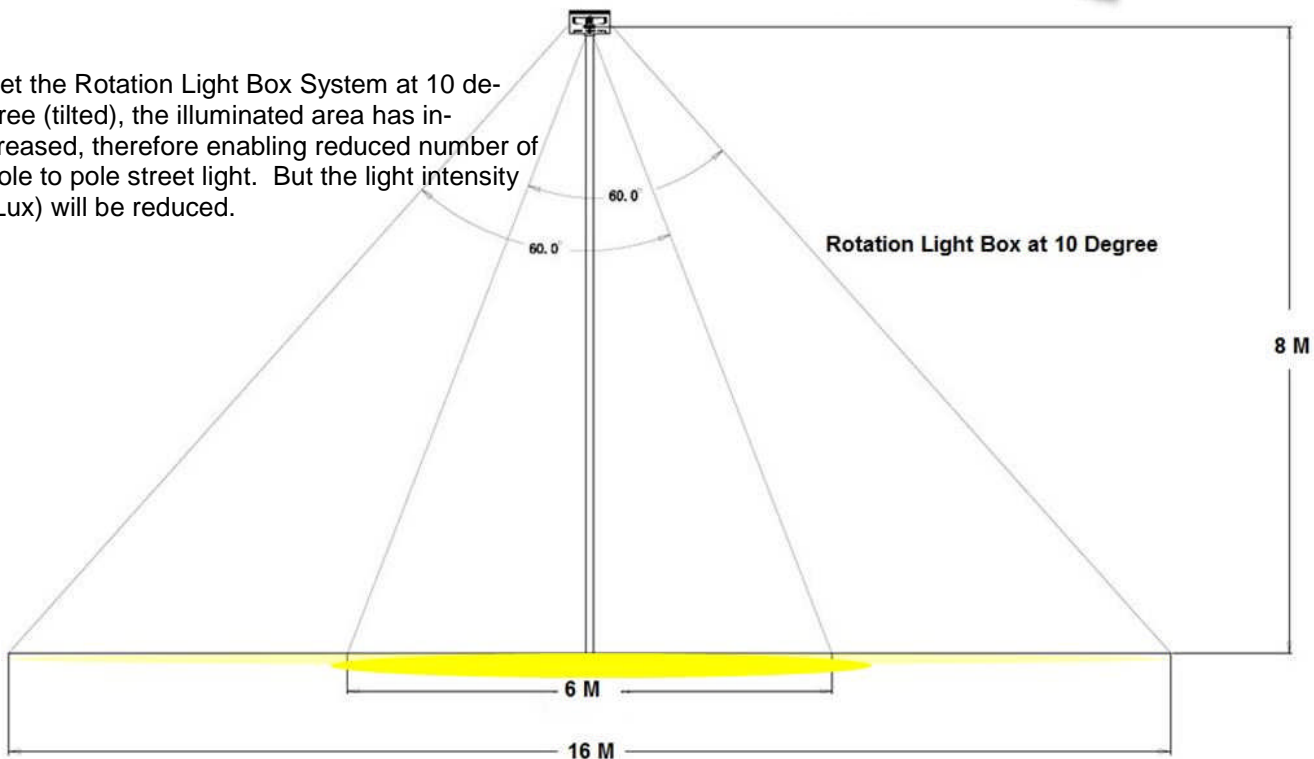




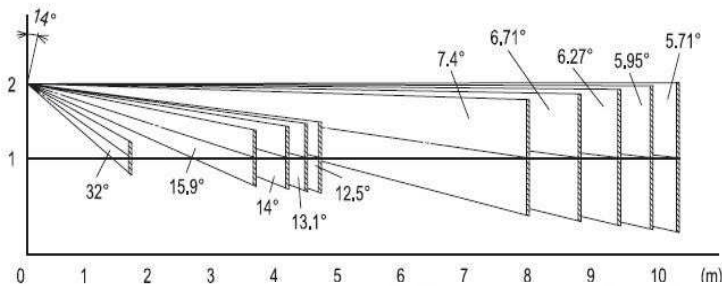
Set the Rotation Light Box System at Zero degree (Flat), the light intensity (Lux) has increased to 100% but the illuminated area will be reduced.



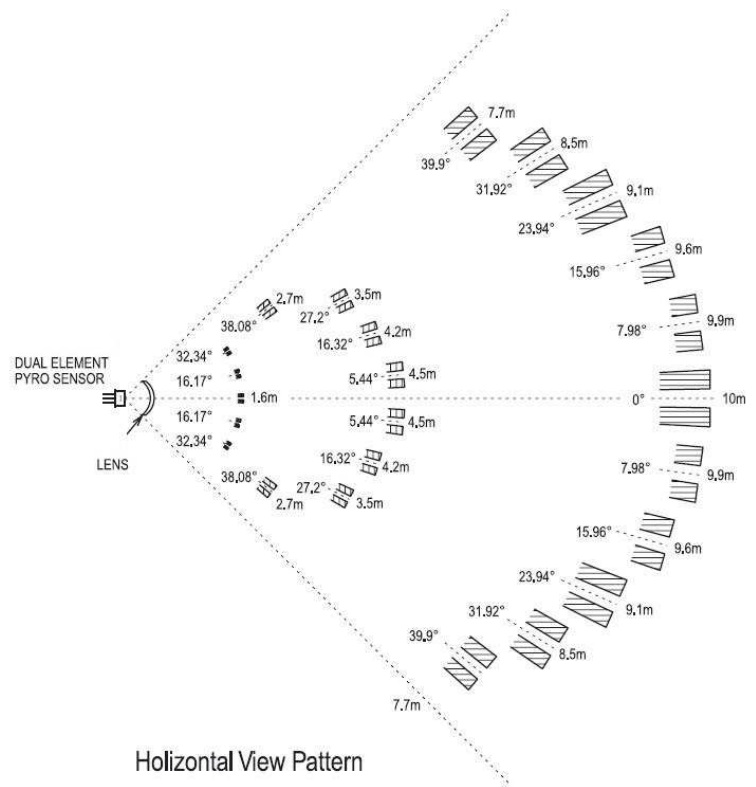
Set the Rotation Light Box System at 10 degree (tilted), the illuminated area has increased, therefore enabling reduced number of pole to pole street light. But the light intensity (Lux) will be reduced.



## Guardian PIR Motion Sensor Detection Range



Vertical View Pattern



Horizontal View Pattern

## SC ORIGIN (M) SDN BHD LIMITED PRODUCT WARRANTY

SC Origin warrants its Solar Omega Street Light (SLM905000) supplied under this Contract to be free from defects in materials and workmanship under normal application, installation, use and service conditions. If the SLM905000 fail to conform to this warranty, then for a period ending twelve (12) months from the delivery date, SC Origin will, at its option, either repair or replace the SLM905000 or refund the purchase price as paid by the BUYER. The remedy set forth in this paragraph shall be the sole and exclusive remedy provided under the Limited Product Warranty ("Limited Warranty") and shall not extend beyond twelve (12) months period set forth herein. Your use of this product constitutes agreement with all provisions of this Limited Warranty.

## EXCLUSIONS AND LIMITATIONS

- Warranty claims in any event must be filed within the applicable warranty period.
- Warranty does not apply to any SLM905000 which in SC Origin absolute judgment have been subjected to:
  - Misuse, abuse, neglect or accident;
  - Alteration, improper installation or application;
  - Non-observance of SC Origin's installation-, users-, and maintenance instructions;
  - Repair or modifications by someone other than an approved service technician of SC Origin;
  - Power failure surges, lighting, flood, fire, accidental breakage or other events outside SC Origin's control.
- Warranty does not cover any transportation costs for return of the SLM905000, or for re-shipment of any repaired or replaced SLM905000, or cost associated with installation, removal or reinstallation of the ALM905000.
- Warranty does not apply under the following conditions:
  - War, theft, vandalism, or an act of nature such as fire, floods, rain, wind, lightning, extreme weather, earthquake
  - Damage during shipment
  - Damages exceeding the total cost of the product